

Viola

Radio Orfeo

for string orchestra

A 1. Electric Mains Hum (G sharp, c. 50 Hz)

♩ = 108

pizz.
(snap)

Charlie Barber

musical notation for measures 1-6 of section A, featuring a pizzicato (snap) and arco section with dynamic markings *sf*, *pp*, *f*, and *pp*.

musical notation for measures 7-12 of section A, featuring dynamic markings *mf*, *pp*, *p*, and *pp*.

B 2. Tuning to Radio Station, No 1

♩ = 96

musical notation for measures 13-15 of section B, featuring a Solo section with dynamic markings *pp*, *f*, and *pp*, and triplet markings (3, 5, 3).

musical notation for measures 16-20 of section B, featuring a Tutti section with dynamic markings *pp*, *f*, *pp*, *pp*, *mf*, and *pp*, and a triplet marking (3).

Viola

23

pp *p* *pp*

C**3. Radio Message, No 1: "Mirrors would do well to reflect again"****Allegro energico**

♩ = 120

25

ff

D

30

sf *pp*

36

mf *cresc.* *f* *ff*

E

41

mf *cresc.*

45

mp *mf*

Viola

49 **F**

mf

54 **G**

f *mp* *p* *cresc.*

60 **H**

mf *dim.*

66

pp *p* *pp* *pp* *p* *pp*

73 **I** div.

ff

77

p

J 4. Tuning to Radio station, No 2

♩ = 96

81

p **3**

Viola

85 unis.

pp *p* *pp*

K 5. Radio Message, No 2: "Jupiter enlightens those he would destroy"

$\text{♩} = 112$

87 pizz. (snap) ϕ arco

f

93

mf *cresc.* *sf*

99

p *p* *cresc.* *mf*

105

f *cresc.* *sf* *f*

111

sf

115 div.

ff *sf* *ff* *sf*

Viola

119

unis.



125

**M** 6. Tuning to Radio station, No 3

129

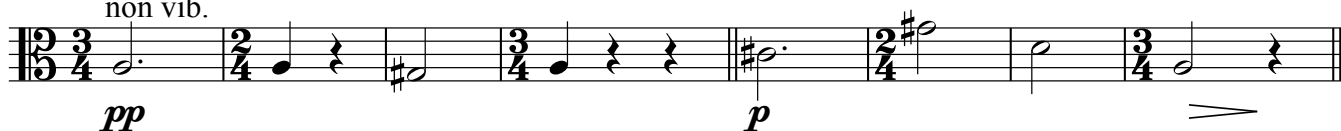
♩ = 96

**N** 7. Radio Message, No 3: "One glass of water illumines the world"
Tranquillo

135

♩ = 60

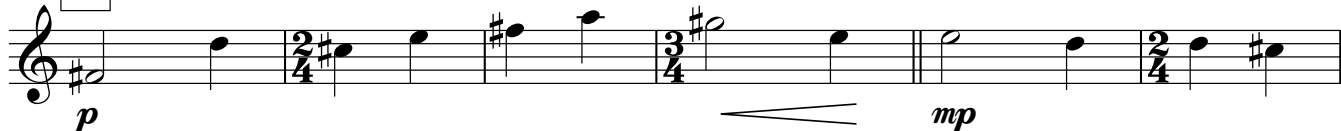
non vib.



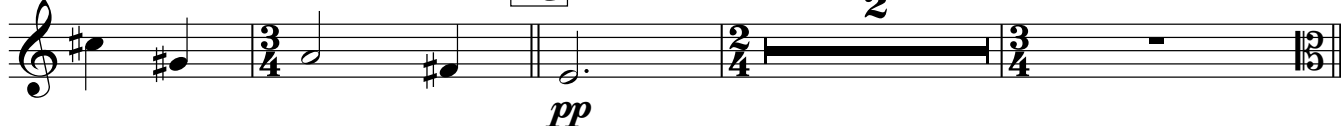
143

O

151

P

157

Q

Viola

163 norm.



8. Tuning to Radio station, No 4

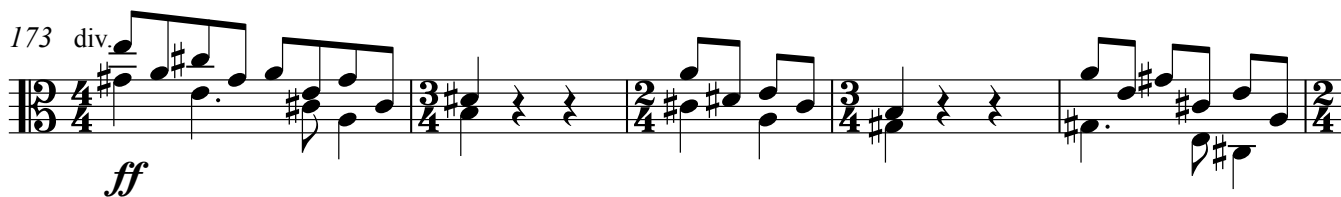
167 **R** ♩ = 96

9. Radio Message, No 4: "Silence is twice as fast backwards"

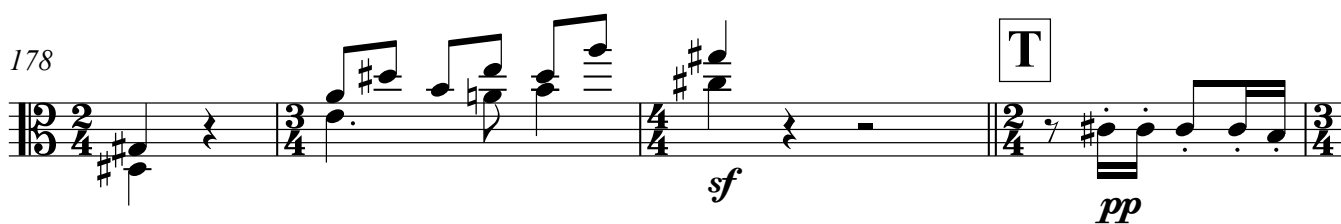
S

Allegro energico

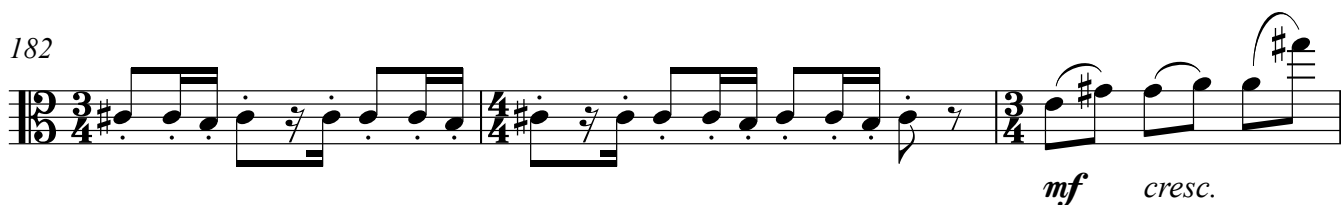
♩ = 120



178



182



185



Viola

189 **U** unis.

mf *cresc.* *mp*

195 **V**

mf *mf*

200

f *mp*

205 **W**

p *cresc.* *mf* *dim.*

212 **X**

p *pp* *p* *pp*

219 **Y** div.

p *pp* *ff* *pp*

224

ff